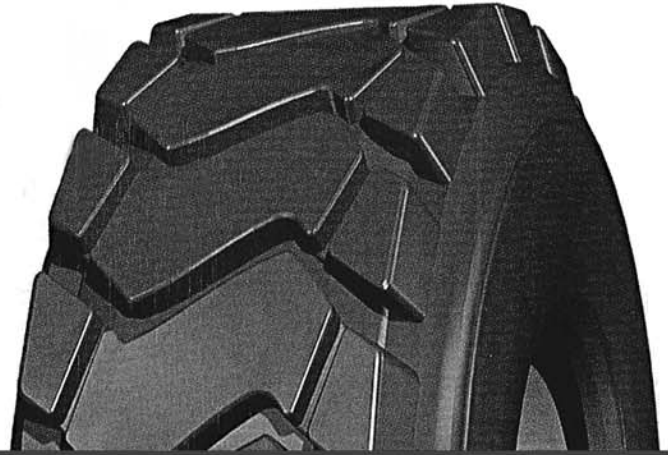




GCA-1

OFF-THE-ROAD

RUGGED
RELIABLE
RESILIENT



GCA-1

Size	Load rating	Tube	Code Indication	Approved rim	Tread Depth (mm)	Load index		New tyre inflated dimensions (mm)		Max. Load (kg/LBS@various inflation pressure (kPa/PSI))	
						Single	Dual	Section Width	Overall Diameter	50km/h B	10km/h A2
17.5R25	*	TL	E-3/L-3	14.00/1.5	28	157B	176A2	494	1405	4125/9100@350/51	7100/15700@450/65
	**					167B	182A2			5450/1200@450/65	8500/18700@575/83
17.5R25	*	TL	E-3/L-3	17.00/2.0	26	168B	186A2	577	1561	7100/15700@350/51	9500/20900@450/65
	**					177B	193A2			7300/16100@450/65	11500/25400@575/83
17.5R25	*	TL	E-3/L-3	19.5/2.5	31.5	176	195	663	1696	7100/15700@375/51	12150/26800@50/65
	**					185	201			9250/20400@450/65	14500/32000@575/83
17.5R25	*	TL	E-3/L-3	22.00/3.0	36	184B	202A2	747	1839	9000/19800@350/51	15000/33100@450/65
	**					193B	209A2			11500/25400@450/65	18500/40800@575/83
17.5R25	*	TL	E-3/L-3	25.00/3.5	43	191B	208A2	833	1972	10900/24000@350/51	18000/39700@450/65
	**					200B	216A2			14000/30900@450/65	22400/49400@575/83
17.5R25	*	TL	E-3/L-3	25.00/3.5	43	193B	211A2	833	2074	11500/25400@350/51	19500/43000@450/65
	**					202B	218A2			15000/33100@450/65	23600/52000@575/83



- Excellent Traction**
- Comfortable Ride**
- Steel Cord Protection From Flat Tires**

Road Force is a Registered and Associate Brand of Hercules Tire & Rubber Company

* Data Sheet