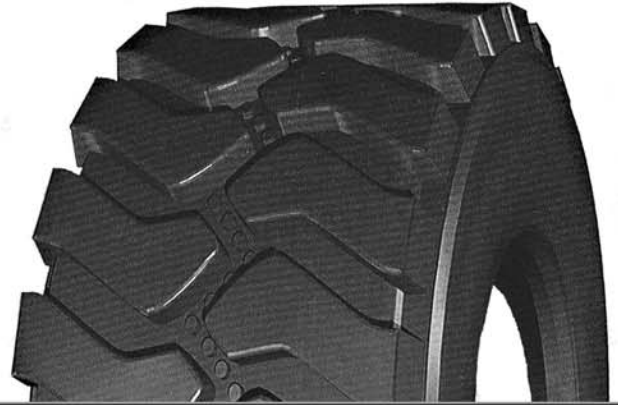





GCA-7

OFF-THE-ROAD


RUGGED
RELIABLE
RESILIENT




| GCA-7 | | | | | | | | | | | |
|----------|-------------|------|-----------------|--------------|------------------|------------|------|-----------------------------------|------------------|---|-----------|
| Size | Load rating | Tube | Code Indication | Approved rim | Tread Depth (mm) | Load index | | New tyre inflated dimensions (mm) | | Max. Load (kg/LBS@various inflation pressure (kPa/PSI)) | |
| | | | | | | Single | Dual | Section Width | Overall Diameter | 50km/h B | 10km/h A2 |
| 26.5R25 | * | TL | E-4 | 22.00/3.0 | 58 | 184B | | 747 | 1839 | 900/19800@350/51 | |
| | ** | | | | | 193B | | | | 11500/25400@450/65 | |
| 29.5R25 | * | TL | E-4 | 25.00/3.5 | 60 | 191B | | 833 | 1972 | 10900/24000@350/51 | |
| | ** | | | | | 200B | | | | 14000/30900@450/65 | |
| 29.5R29 | * | TL | E-4 | 25.00/3.5 | 60 | 193B | | 833 | 2074 | 11500/25400@350/51 | |
| | ** | | | | | 202B | | | | 15000/33100@450/65 | |
| 35/65R33 | * | TL | E-4 | 28.00/3.5 | 62.5 | 199B | | 987 | 2124 | 23000/50700@500/73 | |
| | ** | | | | | 207B | | | | 27250/60000@650/94 | |




Articulated Dumpers



Rigid Dumpers



Loaders





- ☑ **Deep Tread For Wheeled Loaders & Dump Trucks Operating In Quarry Or Mining**
- ☑ **Unique Non-directional Traction Patterns**
- ☑ **Provide Optimum Traction Without Compromising Tread Life**
- ☑ **Super Sidewall Cut Resistance**
- ☑ **Groove Stone Ejector**
- ☑ **Enhanced Stability & Riding Comfort**

Road Force is a Registered and Associate Brand of Hercules Tire & Rubber Company

* Data Sheet